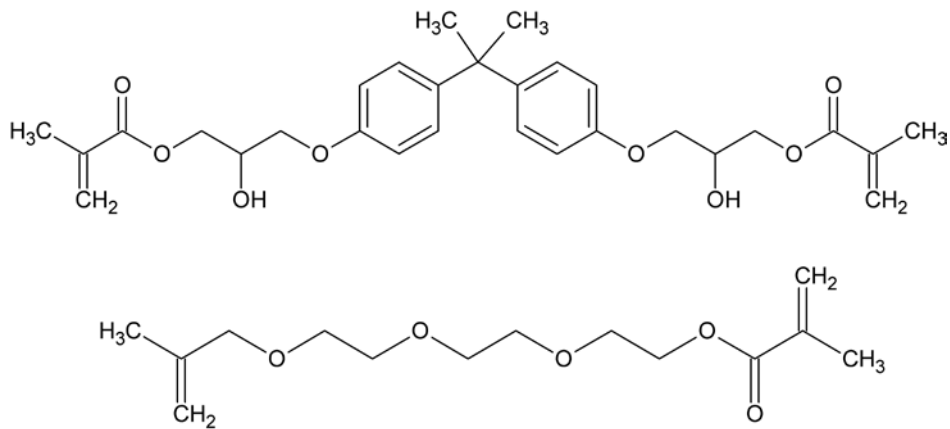


## Item # X-951-0070, BisGMA/Triethyleneglycol Dimethacrylate (70/30)



To simplify your formulation processes, we provide bis GMA already diluted in a 70:30 ratio with TEGDMA. Bis-GMA and triethylene glycol dimethacrylate are commonly paired in dental formulations. All of our bisGMA products carry the lowest levels of BPA or bisphenol A on the market.

### TYPICAL PROPERTIES

Refractive Index	1.500
Viscosity @ 25°C (cps)	500 - 2000
Color (APHA)	<150
Inhibitor	MeHQ – 600 max ppm
Toxic Substance Control Act List	Listed
BisGMA %	68 - 72
TEGDMA %	28 - 32