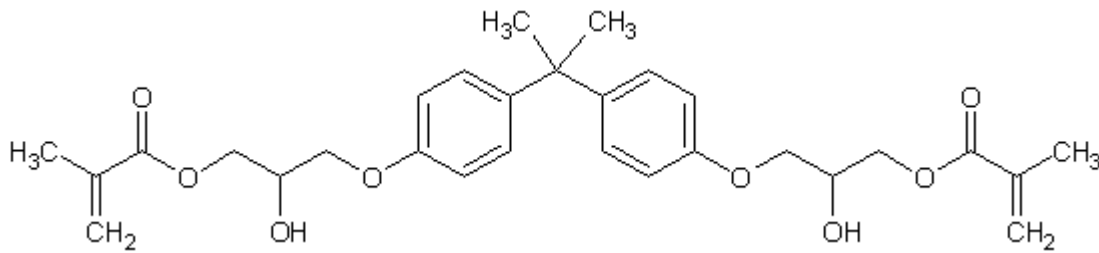


## Item # X-950 0000, BisGMA



**Product Name:** Bisphenol A Glycidyl Methacrylate

**CAS#:** 1565-94-2

Bisphenol A Glycidyl Methacrylate, or bis-GMA is a high viscosity resin that has been used in dental formulations for years. Our bis GMA is manufactured with low levels of BPA or bisphenol A and low color.

### TYPICAL PROPERTIES

Molecular Formula	C <sub>29</sub> H <sub>36</sub> O <sub>8</sub>
Molecular Weight	512.599
Purity	>85
Refractive Index	1.540
Viscosity @ 25°C (cps)	300,000 – 1,100,000
Color (APHA)	<80
Inhibitor	MeHQ – 450-650 ppm, HQ – ≤50 ppm
Toxic Substance Control Act List	Listed