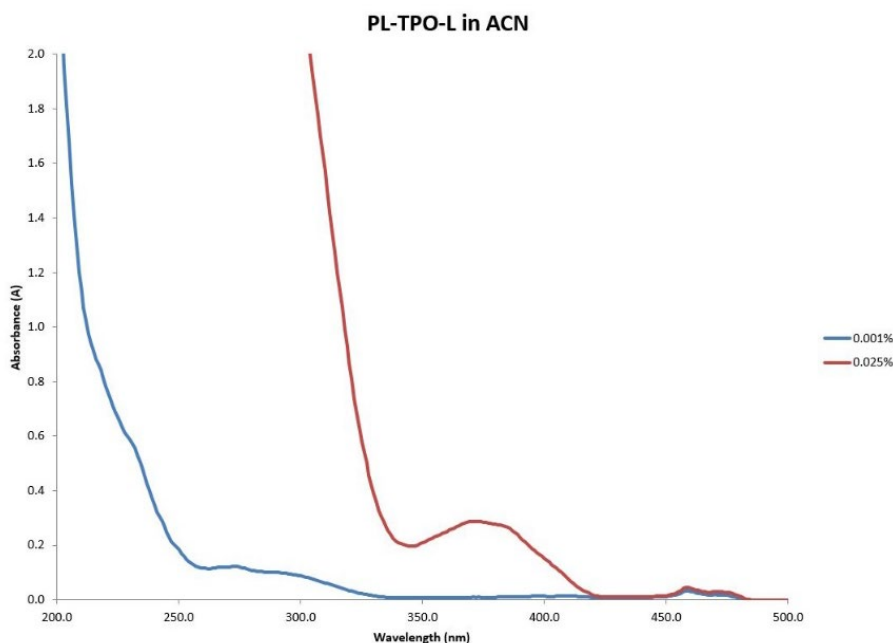


PL-TPO-L: Ethyl (2,4,6-trimethylbenzoyl) Phenylphosphinate

Description

Ethyl (2,4,6-trimethylbenzoyl) phenylphosphinate is a Type-I photoinitiator best known for its through cure abilities. It is soluble in most monomers, oligomers and pre-polymers but insoluble in H₂O.

CAS #: 84434-11-7



Performance Properties

- ✓ Excellent in white pigmented systems and thicker clear coatings
- ✓ Excellent through cure
- ✓ Low yellowing

Typical Applications

- ✓ Light to moderate colored inks and coatings
- ✓ Clear coatings for graphic arts, wood, and plastics

Typical Properties

Appearance	Clear yellow liquid
Molecular Formula	C ₁₈ H ₂₁ O ₃ P
Molecular Weight	316.33
Melt Point	>100°C
Boiling Point	>250°C
Specific Gravity	1.14 g/mL
Usage Levels	0.5 – 4.0 %

All information contained in this data sheet is given in good faith and without liability. It is intended to serve only as guidance. Users are advised to conduct their own evaluation of the product to determine its proficiency into products and processes. Users should ensure that the use of the product complies with all applicable current legislation.

ESSTECH, Inc.

48 W Powhattan Avenue, Essington, PA 19029
610-521-3800

www.esstechinc.com
sales@esstechinc.com