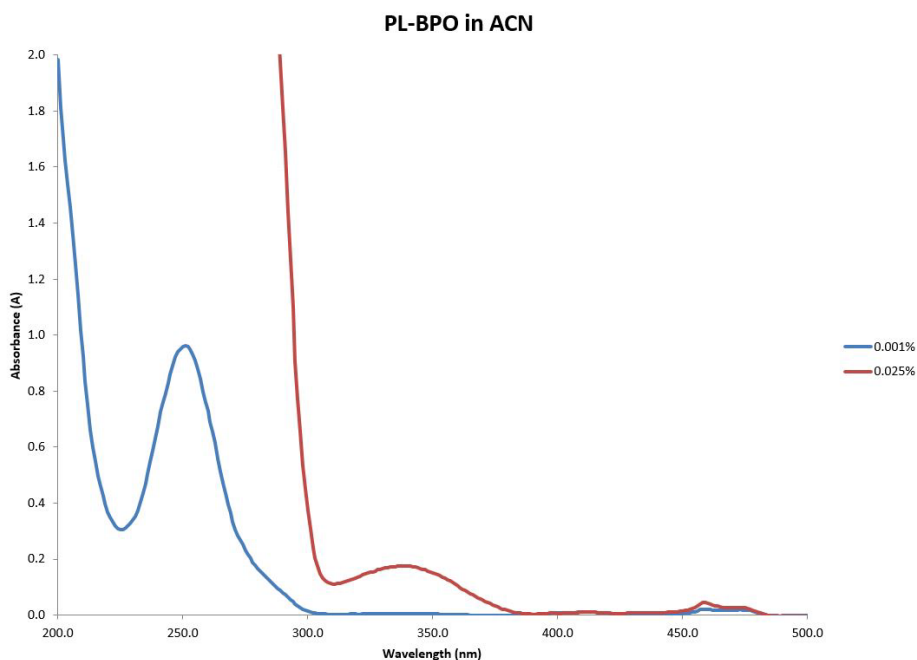


PL-BPO: Benzophenone

Description

Benzophenone is a fast curing type-II photoinitiator. In the presence of O₂, the use of an amine co-initiator is recommended. It is soluble in most monomers, oligomers and pre-polymers. It is insoluble in H₂O.

CAS #: 119-61-9



Performance Properties

- ✓ Very fast curing
- ✓ Excellent hardness

Typical Applications

- ✓ Coatings for graphic arts, wood, plastics, metals, and optical fiber
- ✓ Flexo, screen, litho, dry offset, and inkjet
- ✓ Adhesives

Typical Properties

Appearance	Off-white flakes
Molecular Formula	C ₁₃ H ₁₀ O
Molecular Weight	182.2
Melt Point	48°C
Boiling Point	305°C
Specific Gravity	1.10 g/mL
Usage Levels	1.0 – 8.0 %
Abs. Peaks	254 nm

All information contained in this data sheet is given in good faith and without liability. It is intended to serve only as guidance. Users are advised to conduct their own evaluation of the product to determine its proficiency into products and processes. Users should ensure that the use of the product complies with all applicable current legislation.