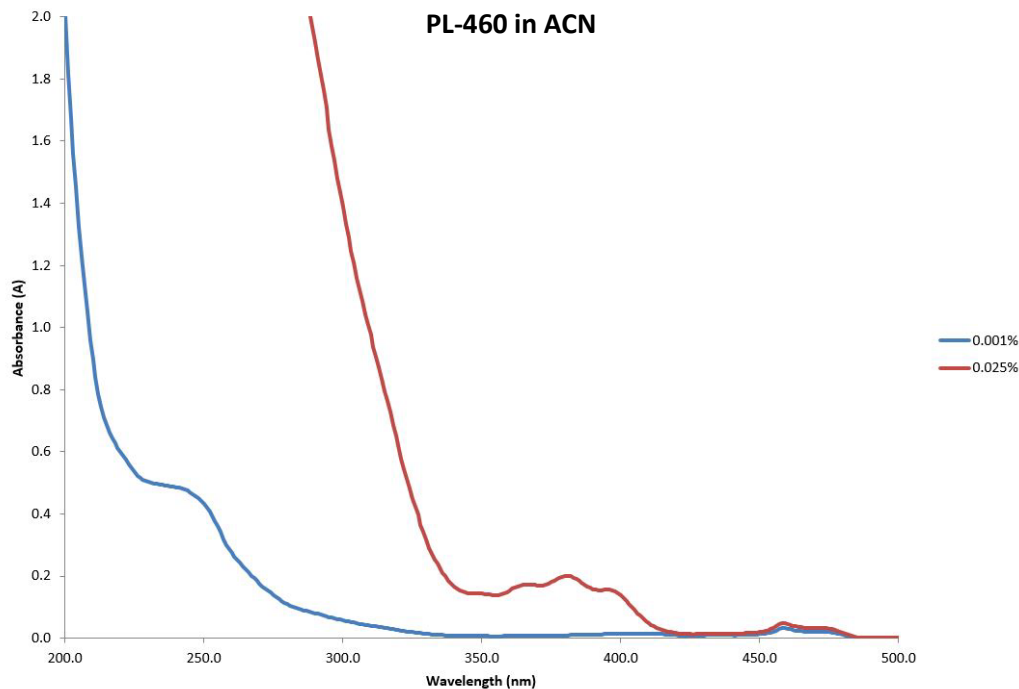


PL-460: SPECIALTY PHOTOINITIATOR BLEND

Description

PL-460 is a liquid photoinitiator compound developed specifically for white and pastel pigmented systems as well as thicker clear films. It provides a perfect balance between surface cure and through cure to enable the best possible adhesion in these systems. Because it's a liquid, it works well as a press side additive for the printer. PL-460 is soluble in most monomers, oligomers and pre-polymers. It is insoluble in H₂O.



Performance Properties

- ✓ Very fast curing
- ✓ Excellent through and surface cure
- ✓ Easy to use liquid
- ✓ Low yellowing

Typical Applications

- ✓ White and pastel inks and coatings
- ✓ Thicker clear coatings for graphic arts, wood, plastics, and metals
- ✓ Adhesives

Typical Properties

Appearance	Light yellow liquid
Viscosity @ 25C	9,000 cps
Specific Gravity	1.18 g/mL
Odor	Faint, characteristic
Usage Levels	2 – 8 %

All information contained in this data sheet is given in good faith and without liability. It is intended to serve only as guidance. Users are advised to conduct their own evaluation of the product to determine its proficiency into products and processes. Users should ensure that the use of the product complies with all applicable current legislation.



ESSTECH, Inc.

48 W Powhattan Avenue, Essington, PA 19029
610-521-3800

www.esstechinc.com
sales@esstechinc.com