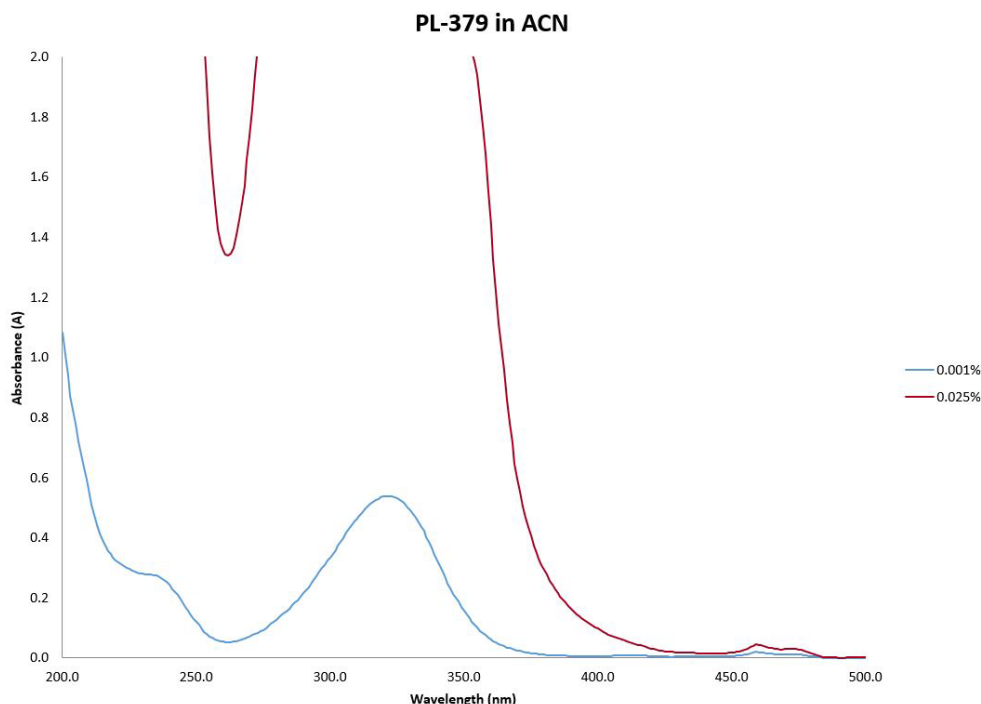


PL-379: 2-(4-Methylbenzyl)-2-(dimethylamino)-1-(4-morpholinophenyl)butan-1-one

Description

2-(4-Methylbenzyl)-2-(dimethylamino)-1-(4-morpholinophenyl)butan-1-one is a highly effective photo-initiator, intended primarily for use in pigmented systems. PL-379 has excellent solubility in most monomers and oligomers, making it easy to incorporate into formulations.

CAS #: 119344-86-4



Performance Properties

- ✓ Excellent solubility in a wide range of formulations
- ✓ Good in pigmented systems (non-white)

Typical Applications

- ✓ Printing inks such as letterpress, flexo, screen, and offset
- ✓ Photoresists in electronics
- ✓ Pigmented coatings

Typical Properties

Appearance	Light yellow powder
Molecular Formula	C ₂₄ H ₃₂ N ₂ O ₂
Molecular Weight	366.5
Melt Point	112°C
Usage Levels	0.5-5 %

All information contained in this data sheet is given in good faith and without liability. It is intended to serve only as guidance. Users are advised to conduct their own evaluation of the product to determine its proficiency into products and processes. Users should ensure that the use of the product complies with all applicable current legislation.

ESSTECH, Inc.

48 W Powhattan Avenue, Essington, PA 19029
610-521-3800

www.esstechinc.com
sales@esstechinc.com