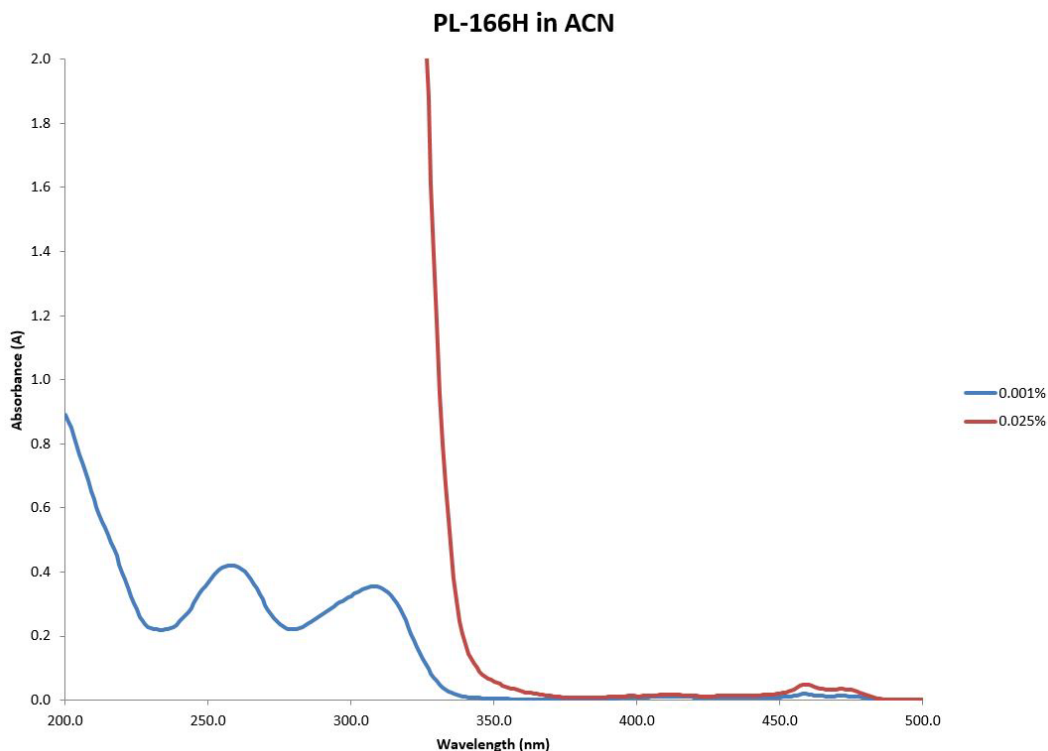


PL-166H: PHOTOINITIATOR BLEND

Description

PL-166H is a 2:1 blend of oligo [2-hydroxy-2-methyl-1-[4-(1-methylvinyl) phenyl] propanone] and EHA. It is a fast curing Type-I photoinitiator soluble in most monomers, oligomers and pre-polymers but insoluble in H₂O.



Performance Properties

- ✓ Very fast curing
- ✓ Excellent surface cure
- ✓ Low Odor

Typical Applications

- ✓ Coatings for graphic arts, wood, plastics, metals
- ✓ Flexo, screen, litho, dry offset inks
- ✓ Adhesives

Typical Properties

| | |
|------------------|-----------------------|
| Appearance | Yellow viscous liquid |
| Flash Point | >100°C |
| Boiling Point | >200°C |
| Specific Gravity | 1.04 g/mL |
| Odor | Faint, characteristic |
| Usage Levels | 0.5 – 10% |

All information contained in this data sheet is given in good faith and without liability. It is intended to serve only as guidance. Users are advised to conduct their own evaluation of the product to determine its proficiency into products and processes. Users should ensure that the use of the product complies with all applicable current legislation.