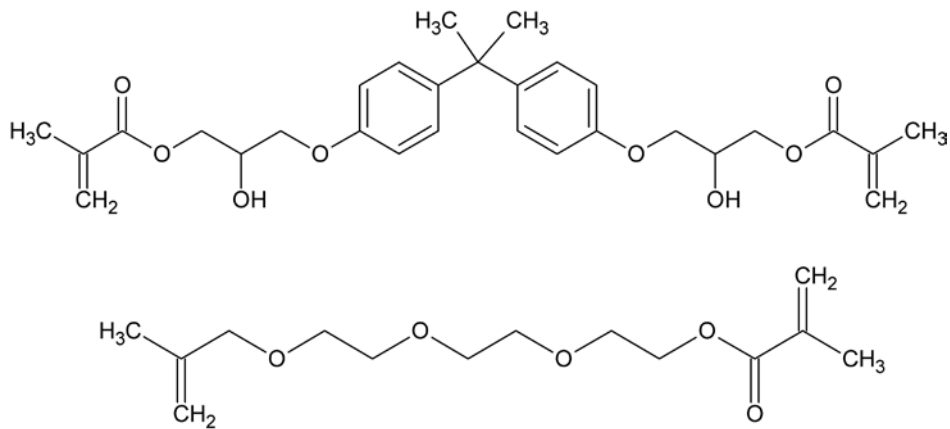


Item # X-951-0050, BisGMA/Triethyleneglycol Dimethacrylate (50/50)



To simplify your formulation processes, we provide bis GMA already diluted in a 50:50 ratio with TEGDMA. Bis-GMA and triethylene glycol dimethacrylate are commonly paired in dental formulations. All of our bisGMA products carry the lowest levels of BPA or bisphenol A on the market.

TYPICAL PROPERTIES

Refractive Index	1.500
Viscosity @ 25°C (cps)	125 – 325
Color (APHA)	<150
Inhibitor	MeHQ – 600 max ppm
Toxic Substance Control Act List	Listed
BisGMA %	48 - 52
TEGDMA %	48 - 52